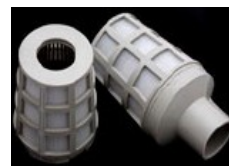


## Water Softener Systems

Hard **water** is high in dissolved minerals, largely calcium and magnesium ions, that cause scale deposits and also can cause itchy dry skin and hair because there's so much extra calcium and magnesium salts. **Water softeners** can help to reduce this scale build-up by using ion exchange technology to attract the Calcium and Magnesium salts.

Model	WS750	WS1500	WS2500	WS3000	WS10000
Permeate flowrate at 15 degrees (L/hr)	750	1500	2500	3000	10 000
Pressure Vessel Size	10 X 35	10 x 54	13 X 54	14 X 65	24 X 72
Operating Pressure ( bar )	10	10	10	10	10
Burst Pressure ( bar )	42	42	42	42	42
Operating Temperature ( degrees celcius )	1-49	1-49	1-49	1-49	1-49
Resin volume ( L )	25	50	75	100	300
Brine Tank ( L )	100	100	100	100	100
Brine Tank with - Grid and Brine Valve	*	*	*	*	*
Riser Pipes and strainers	*	*	*	*	*
Automatic filtration Valve	Runxin	Runxin	Runxin	Runxin	Runxin
Electrical Supply	220 Volts, 5 Amps – 12 Volts				
Connection DN(inches) Feed/Drain	1" / ½ "	1" / ½ "	1" / ½ "	1" / ½ "	65 mm
<b>Dimensions ( mm ) – Pressure Vessels</b>					
Tank Body	FRP Filament Wound Outer Shell				
Base	FRP or Reinforced PP				
Opening	2,5" and 4" reinforced plastic threads – 6" Flange, Aluminium Alloy				
Diameter	257	257	334	360	615
Height	910	1388	1400	1662	1890



MemAqua Solutions are able to manufacture, supply and fit these Softening plants as per our client's requirements and we tailor make systems for the following applications where specific treatment processes are required.

- Drinking water for Hotels, restaurants, hospitals and residences, where we can also treat high levels of Iron, fluoride or Nitrate using our specifically selective Ion Exchange Resins.
- Pre- Treatment systems for High Purity water for the Dialysis Sector where we can supply direct feed into the Dialysis units or via a storage tank with UV circulation for bacteria control.
- Provide Pre- treatment units for water purifiers, Reverse Osmosis Units, UV systems and Filtration units
- We also supply smaller Softener units for under the counter and over the counter household and Office Supply.
- We supply Softener units for household applications for geysers, dishwashers etc...

## Larger Industrial Units

Model	WS 40000
Permeate flowrate at 15 degrees (L/hr)	40 000
Pressure Vessel Size	48 X 72
Operating Pressure ( bar )	10
Burst Pressure ( bar )	42
Operating Temperature ( degrees celcius )	1-49
Resin volume ( L )	1100
Brine Tank ( L )	1000
Brine Tank with - Grid and Brine Valve	*
Riser Pipes and strainers	*
Automatic filtration Valve	Runxin
Electrical Supply.	220V
Connection DN(inches) Feed/Drain	75/65
<b>Dimensions ( mm ) – Pressure Vessels</b>	
Diameter	1218
Height	2270